

# LEO RECORD

Digital manometer with record function

Accuracy: 0,1 %FS



actual value

status indication

SELECT

ENTER

G1/4"



LEO RECORD has two operating keys. The left key (SELECT) serves to select the functions and the pressure units. The right key (ENTER) activates the selected function or pressure unit.

**Turn-on:** Pressing the SELECT key turns the instrument on. It first shows the full-scale pressure range (top display) and the software version (bottom display). The instrument is then ready for use and indicates the actual pressure (top display) and the record status (bottom display).

The instrument has the following functions:

**OFF:** Turns off the instrument and end an active record  
**MANO:** Releases the following functions:  
**rEC Strt:** Starts a record with the actual configuration (set via the software)  
**rEC StoP:** Ends an active record  
**ZERO SET:** Sets a new Zero reference  
**ZERO rES:** Sets the Zero to factory setting,

followed by the unit selection:

bar, mbar/hPa, kPa, MPa, PSI, kP/cm<sup>2</sup>, (m)H<sub>2</sub>O

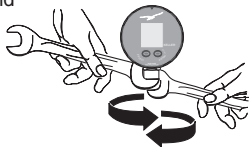
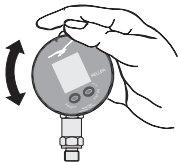
Example: Setting a new Zero Reference:

- > Turn on the instrument by shortly pressing the SELECT-key
- > Wait for the instrument's measuring mode (approx. 3 seconds).
- > Press the SELECT-key 2 times: MANO appears
- > Press ENTER: rEC Strt appears
- > Press the SELECT-key 2 times: ZERO SET appears
- > Press ENTER: The new Zero reference is set. The instrument returns to the measuring mode.

- The functions and units can also be called up by keeping the SELECT-key depressed. Releasing the key enables the displayed function or unit to be activated with the ENTER-key.
- If the selected function or unit is not activated within 5 seconds with the ENTER-key, LEO RECORD returns to the measuring mode without changing any settings.
- Turning LEO RECORD on and off does not influence any of the previous settings.
- In the measuring mode, the record status is always indicated on the bottom display (run, prep, end).
- If a pressure can not be represented on the display, OFL (overflow) or UFL (underflow) appears on the display.
- If the actual pressure goes beyond the measuring range, the last valid pressure value starts flashing on the display.
- Both the PC-Software and the LEO RECORD indicate the battery condition in only 2 ways: 0% (BatLow display) and 100%.
- LEO RECORD's internal clock is also updated when the instrument is turned off. The clock is automatically updated by the PC-software (Logger 4.x) when writing a record configuration.
- After a battery change, LEO RECORD has to be reconfigured with the PC-Software (Logger 4.x).
- If a record is active, the display of the pressure is updated according to the set record interval (at least every 5 seconds)

## Installation

Screw the G1/4 male port of LEO RECORD into the female pressure port and tighten using the lower hexagon of the transducer. Loosen the upper hexagon and rotate the LEO RECORD to the desired position. Retighten.



The face of LEO RECORD can be rotated through 355°. This feature allows the LEO RECORD to be mounted in all possible positions; vertical, horizontal or upside down.

## Battery Change / Battery Life

When the battery starts weakening, a low battery warning will appear (BAT LOW). Battery change: Open the instrument (turn the display ring beyond the limit stop). Disconnect the battery. Remove weak battery and insert new one. Close the instrument.

The battery life is up to 5 years, depending on measuring cycle.

Battery-type: 3,6 V Lithium Battery, Type SL-760.

## Ranges / Calibration

The factory setting of the Zero for the ranges  $\leq 30$  bar is at 0 bar absolute. For sealed gauge pressure measurements, activate "ZERO SET" at ambient pressure. Instruments with ranges  $> 30$  bar are calibrated in a sealed gauge mode at ambient pressure.