

# LEX 1

Highly Precise Digital Manometer



Actual Value

Max.- / Min.-Value

SELECT

ENTER  
Max. / Min.

G 1/4"



[www.keller-druck.com](http://www.keller-druck.com)

**KELLER AG**  
**KELLER GmbH**

St. Gallerstrasse 119  
Schwarzwaldstrasse 17

CH-8404 Winterthur  
D-79798 Jestetten

Tel. ++41 (0)52 235 25 25  
Tel. ++49 (0)7745 9214 0

LEX 1 has two operating keys. The left key (SELECT) serves to select the functions and the pressure units. The right key (ENTER) activates the selected function or pressure unit. The right key is also used to switch between the Max.- and Min.-value.

**Turn-on:** Pressing the SELECT key turns the instrument on. The instrument first displays the software version (year/week) and the full-scale pressure range. The instrument is then ready for use and indicates the actual pressure (top display) and the last measured Max.-value (bottom display).

The instrument has the following functions:

<b>RESET:</b>	Max.-/Min.-value are set to the actual pressure
<b>OFF:</b>	Turns off the instrument
<b>MANO:</b>	Releases the following functions:
<b>ZERO SET:</b>	Sets a new Zero reference
<b>ZERO rES:</b>	Sets the Zero to factory setting
<b>CONT on:</b>	Deactivates the automatic turn-off function
<b>CONT off:</b>	Activates the automatic turn-off function (the instrument turns off 15 minutes after the last key function)

followed by the unit selection: **bar, mbar, hPa, kPa, MPa, PSI, kp/cm<sup>2</sup>, cmH<sub>2</sub>O, mH<sub>2</sub>O, inH<sub>2</sub>O, ftH<sub>2</sub>O, mmHg, inHg**

Example: Setting a new pressure unit (mbar):

- > Turn on the instrument by shortly pressing the SELECT-key.
- > Wait for the instrument's measuring mode (approx. 3 seconds).
- > Press the SELECT-key 3 times: **MANO** appears.
- > Press ENTER: **ZERO SET** appears.
- > Press SELECT: **ZERO rES** appears.
- > Press SELECT: **CONT on** or **CONT off** appears.
- > Press SELECT: **bar** appears.
- > Press SELECT: **mbar** appears.
- > Press ENTER: The new pressure unit (mbar) is set.  
The instrument returns to the measuring mode.

## Display of the minimum pressure value

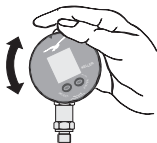
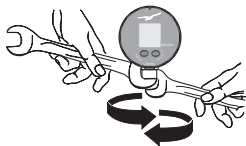
When in the measuring mode (Display: Actual Pressure and Max.-value), you may display the Min.-value for 5 seconds by shortly pressing the ENTER-key.

## Notes

- The functions and units can also be called up by keeping the SELECT-key depressed. Releasing the key enables the displayed function or unit to be activated with the ENTER-key.
- If the selected function or unit is not activated within 5 seconds with the ENTER-key, LEX 1 returns to the measuring mode without changing any settings.
- Turning LEX 1 on and off does not influence any of the previous settings.
- If the CONT on function is activated, it is indicated with a flashing sign (cont) on the display.
- If a pressure can not be represented on the display, OFL (overflow) or UFL (underflow) appears on the display.
- If the actual pressure goes beyond the measuring range, the last valid pressure value starts flashing on the display.

## Installation

Screw the G1/4 male port of LEX 1 into the female pressure port and tighten using the lower hexagon of the transducer. Loosen the upper hexagon and rotate the LEX 1 to the desired position. Retighten.



The face of LEX 1 can be rotated through 355°. This feature allows the LEX 1 to be mounted in all possible positions; vertical, horizontal or upside down.

## Battery Change / Battery Life

When the battery starts weakening, a low battery warning will appear (BAT LOW).

Battery change (turn off the instrument before changing the battery!): Open the battery compartment and change the battery (type CR 2430). Make sure that the O-ring remains embedded in the cover.

The battery life is 2000 hours in normal measuring mode.

## Ranges / Calibration

The factory setting of the Zero for the ranges  $\leq 31$  bar is at 0 bar absolute. For sealed gauge pressure measurements, activate "ZERO SET" at ambient pressure. Instruments with ranges  $> 31$  bar are calibrated in a sealed gauge mode at ambient pressure.

## Interface (RS485)

The interface converter K103A (RS232) or K104A (USB) can be connected at the back of the manometer, allowing the data transfer to the PC. The corresponding software can be found on our web site.